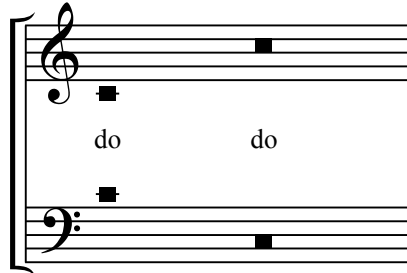


# How to Find *do*

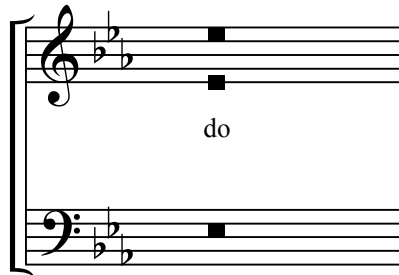
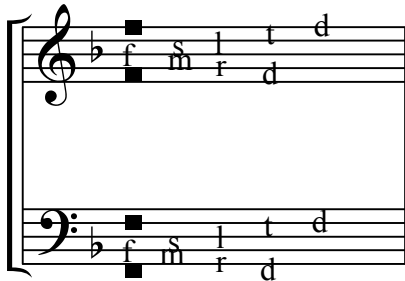
Michael Driscoll

You can find *do* in any key if you memorize the following three simple rules.

**Rule 1:** If there are no sharps ( $\sharp$ ) or flats ( $\flat$ ) after the clef sign ( $\text{treble}$  or  $\text{bass}$ ), *do* is always the note C.



**Rule 2:** If there are **flats** after the clef sign (in the key signature), the flat farthest to the right is *fa*. Count the lines and spaces up or down to locate *do*.



**Rule 3:** If there are **sharps** in the key signature, the sharp farthest to the right is *ti*. Count the lines and spaces up or down to locate *do*.

