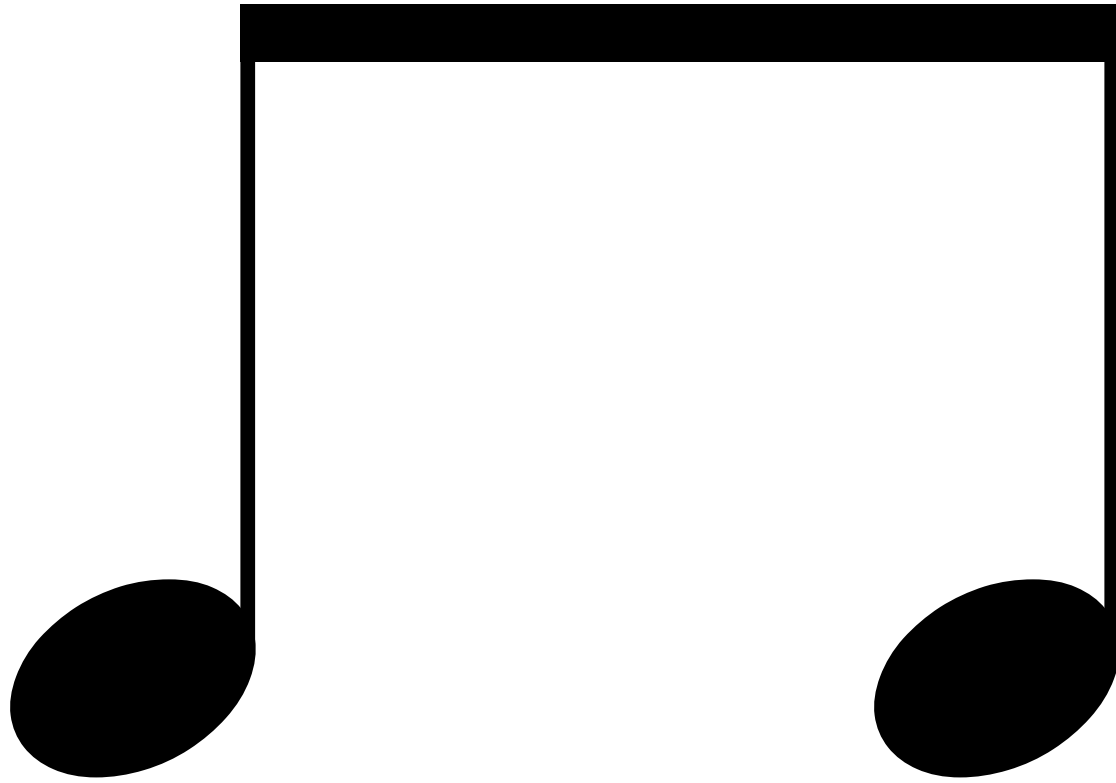
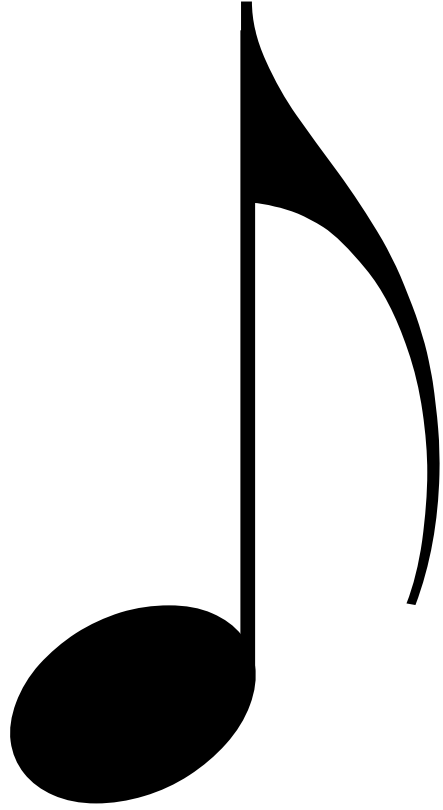


ta



ta

di



ta



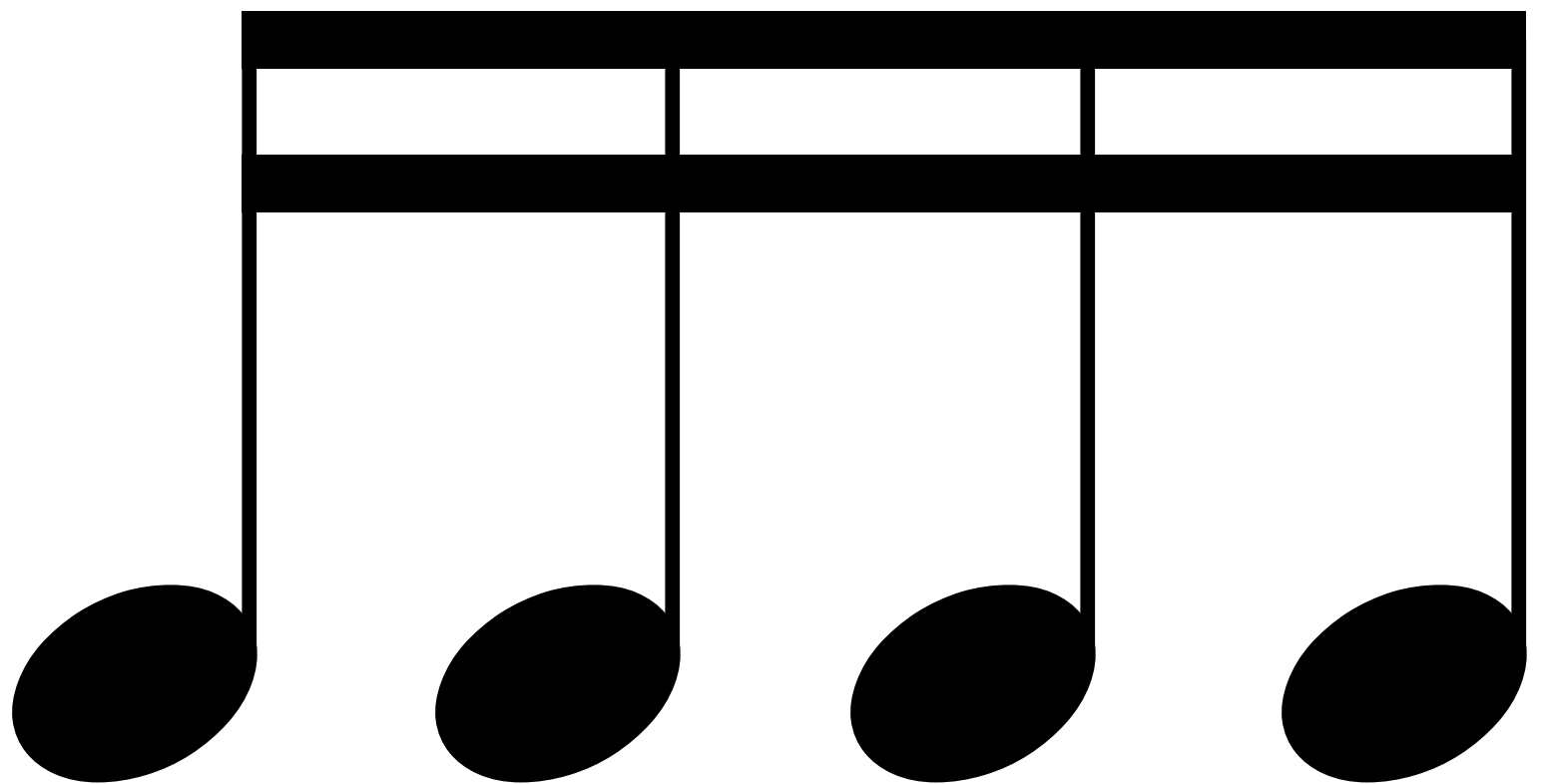
(di)



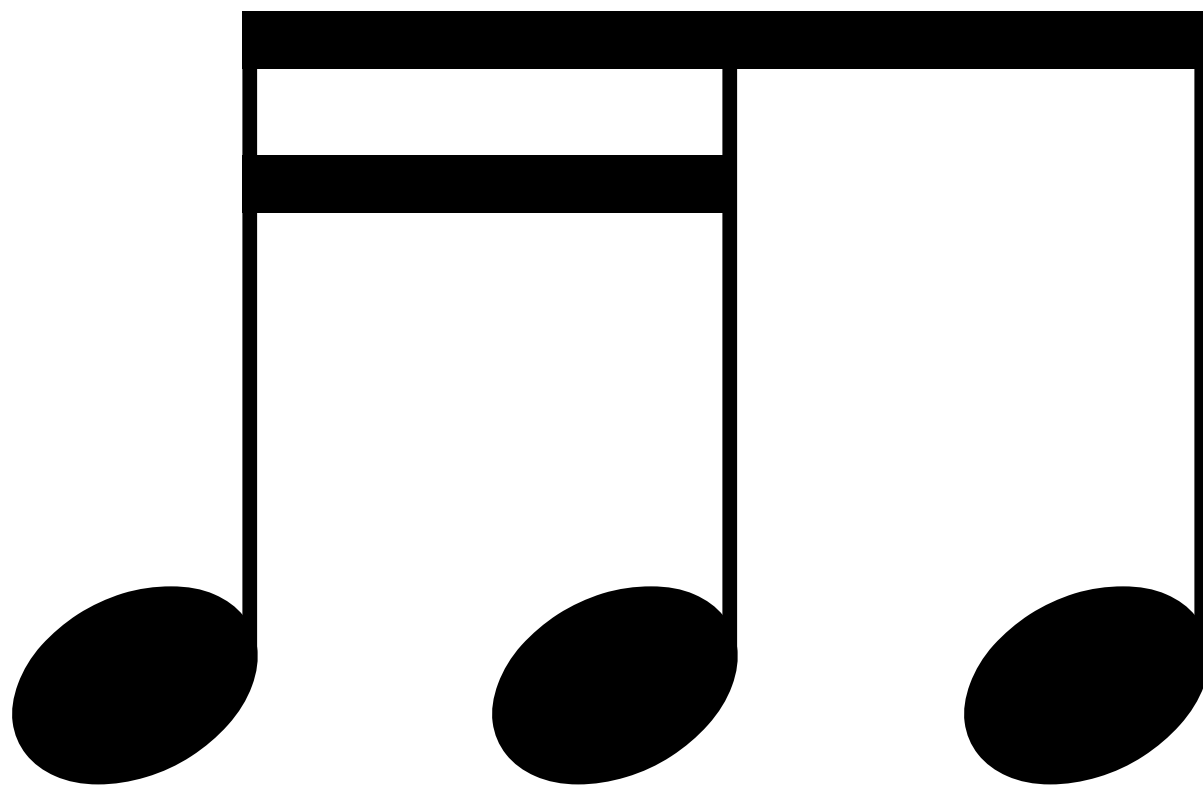
(ta)



di



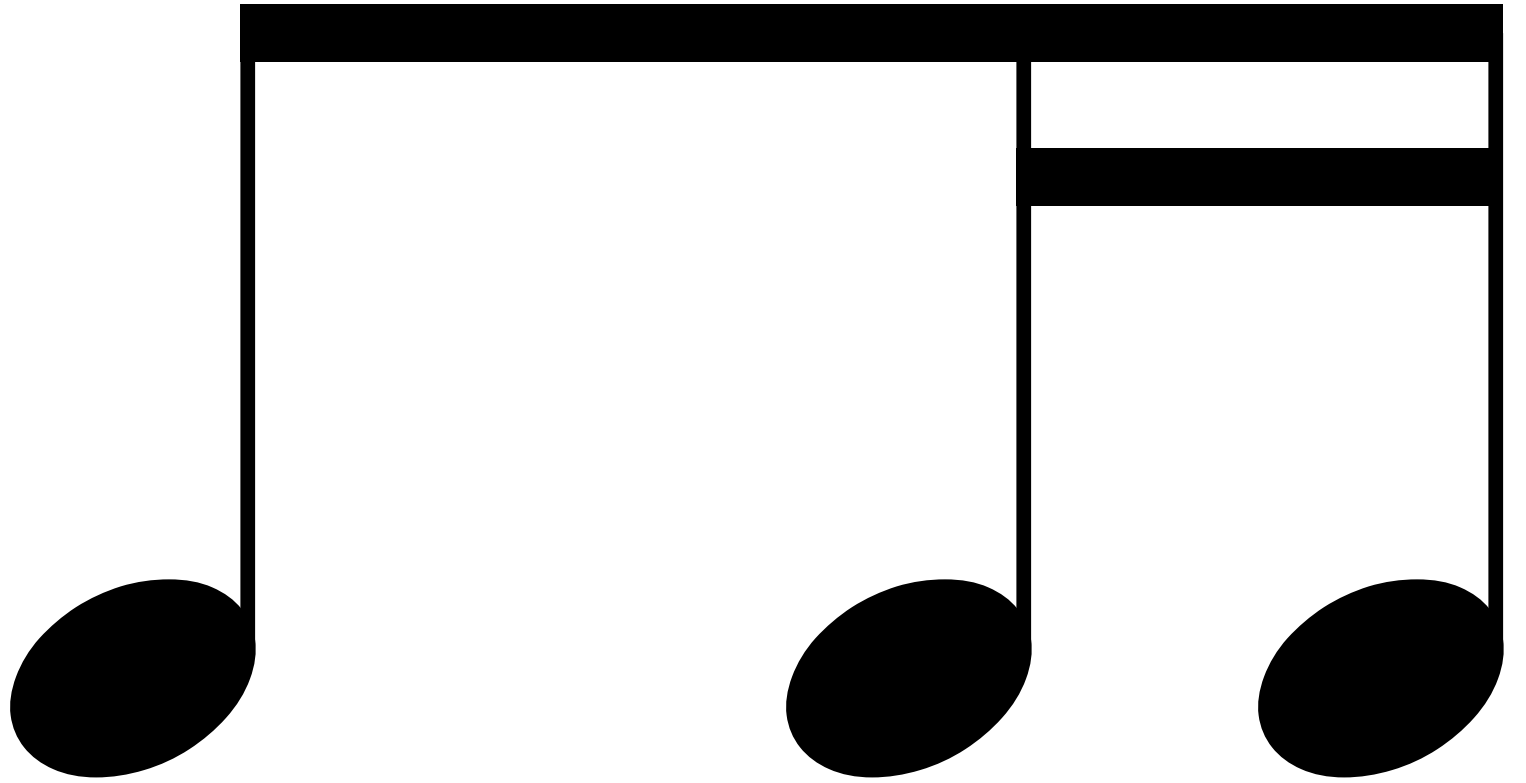
ta ka di mi



ta

ka

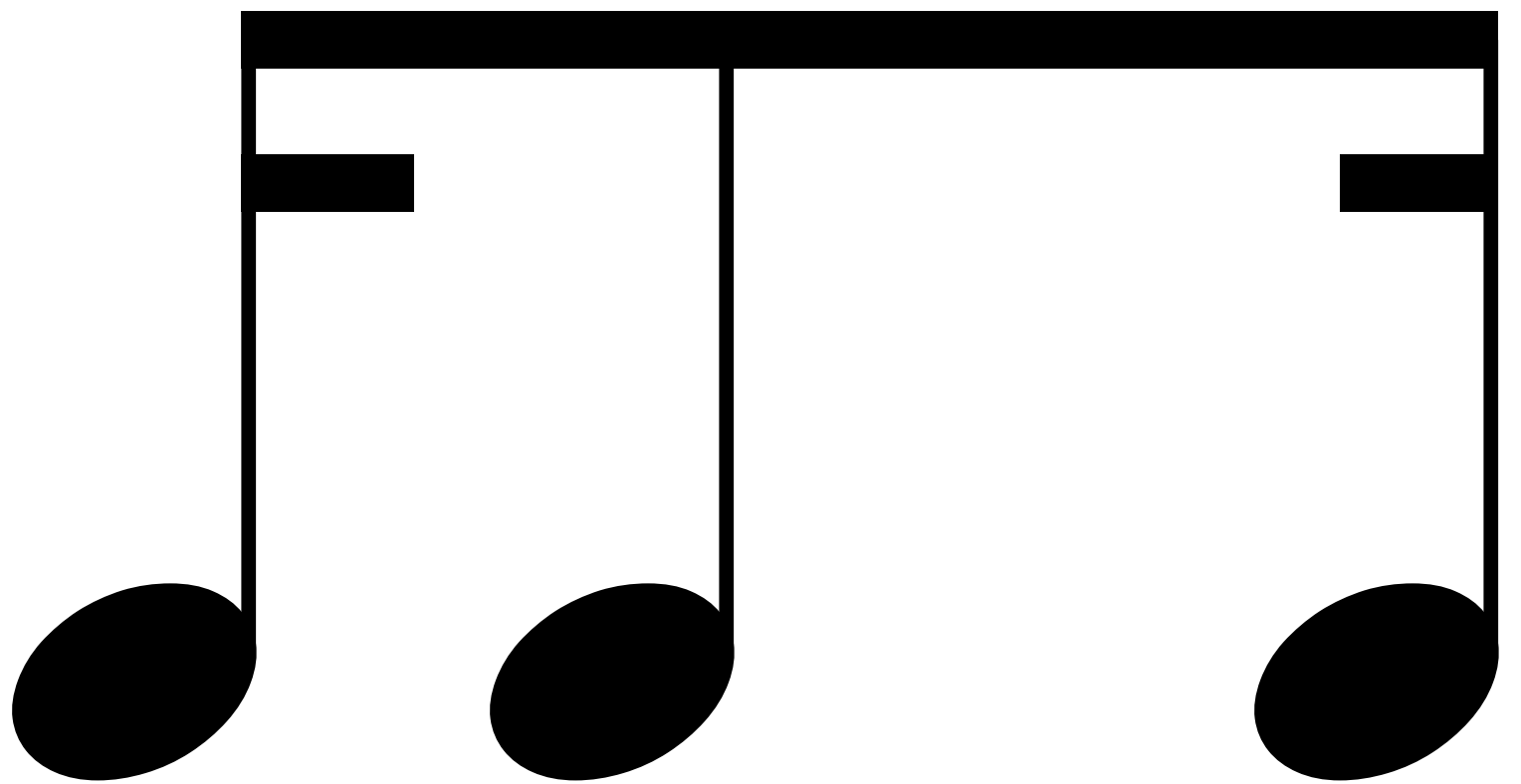
di



ta

di

mi



ta

ka

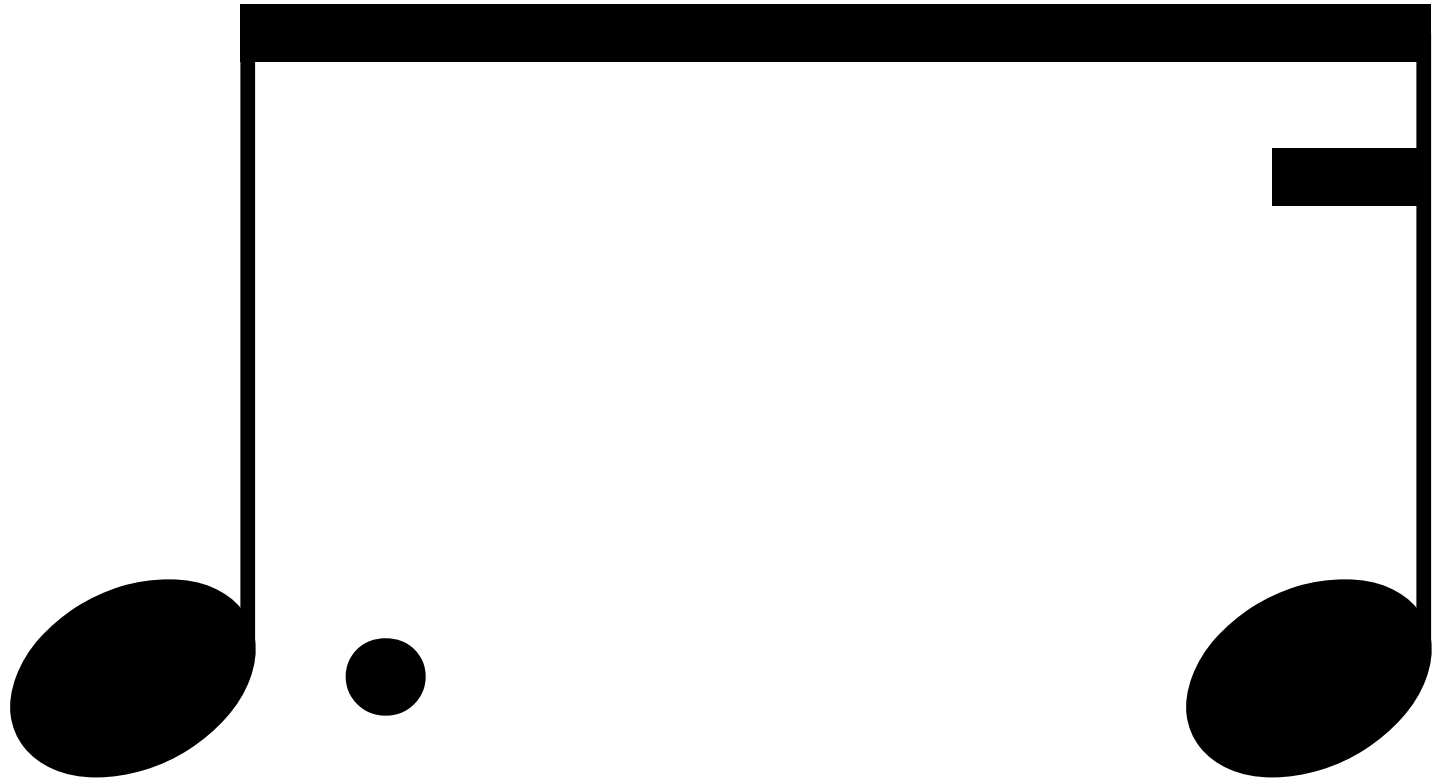
mi



ta

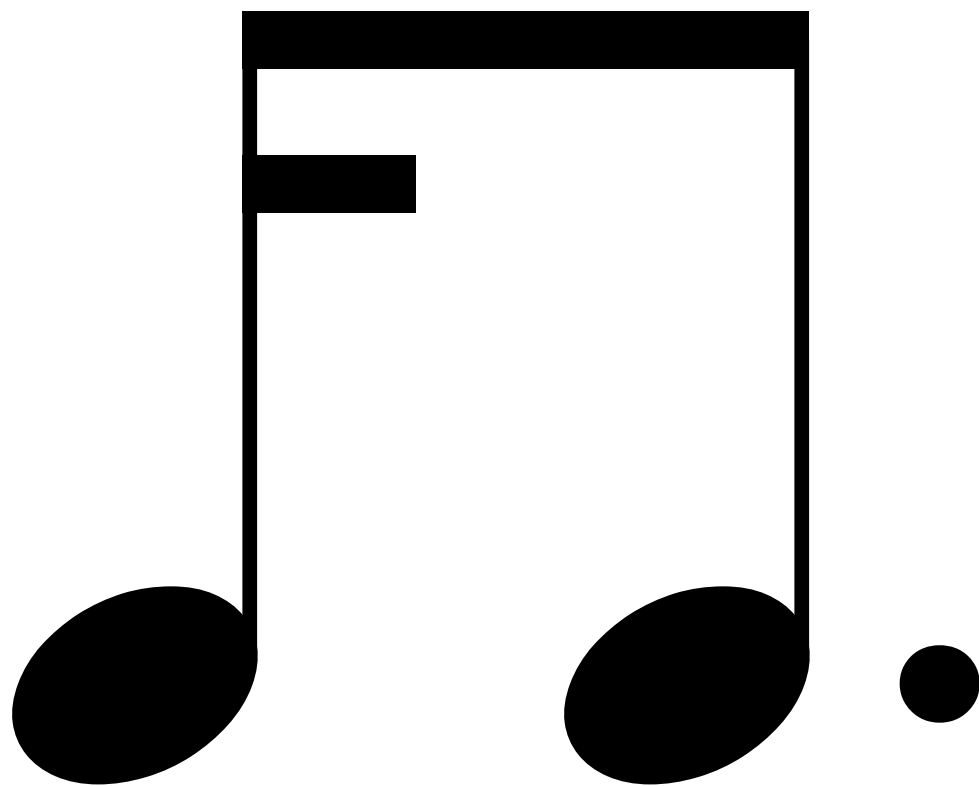
(di)

mi



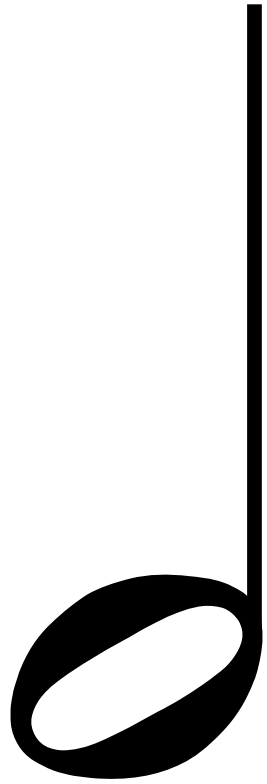
ta

mi

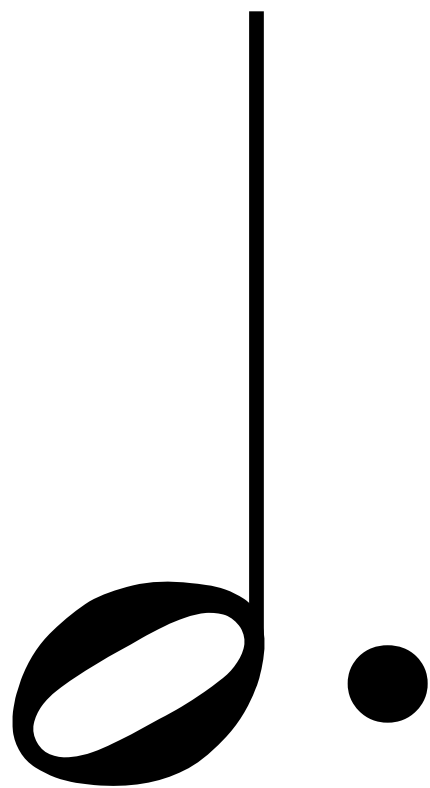


ta

ka



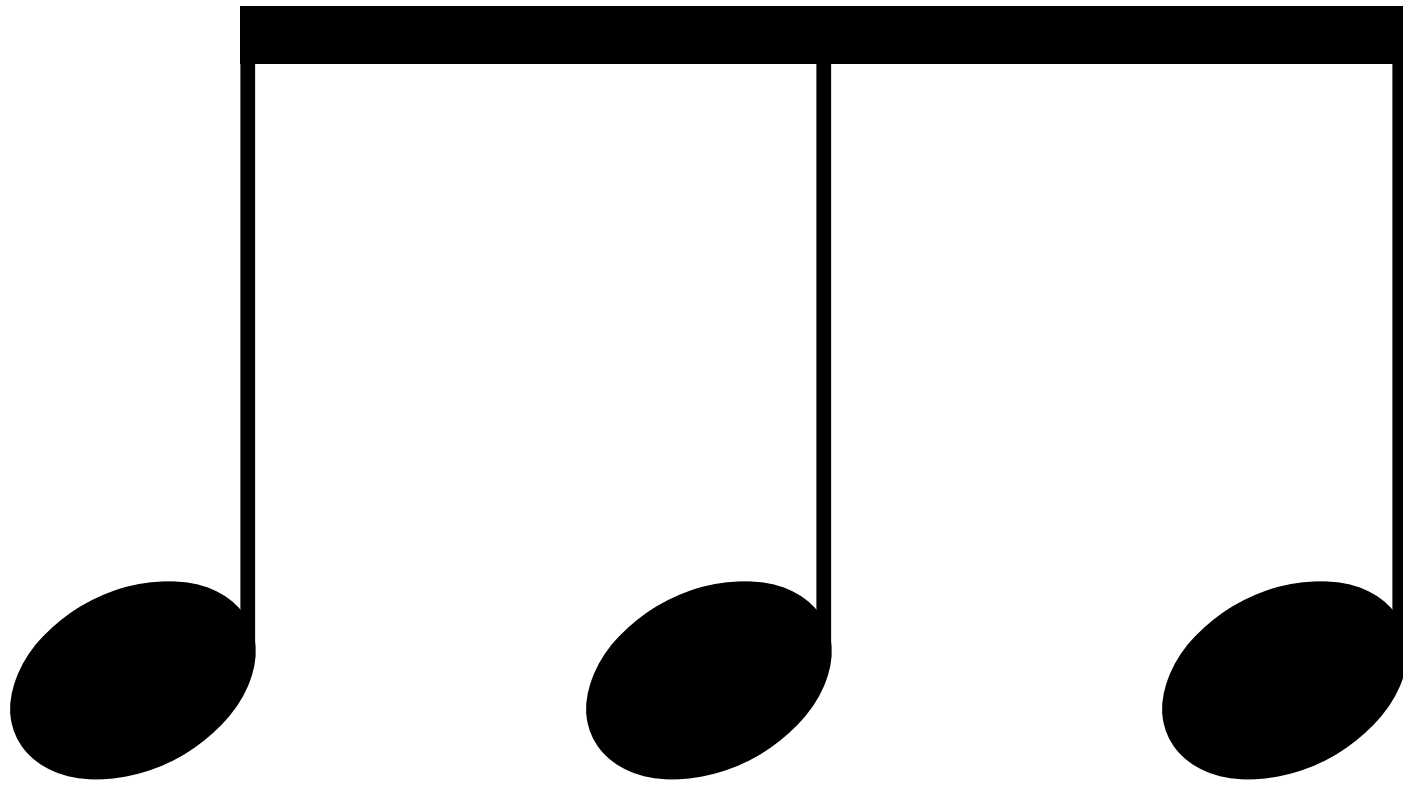
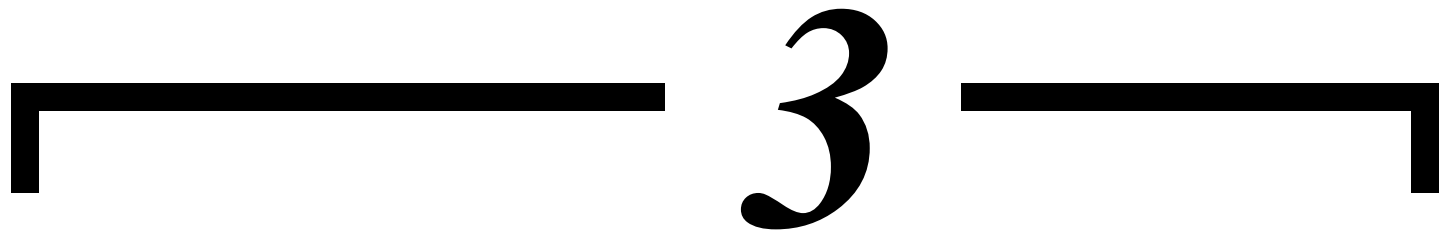
ta_a



ta _ a _ a

O

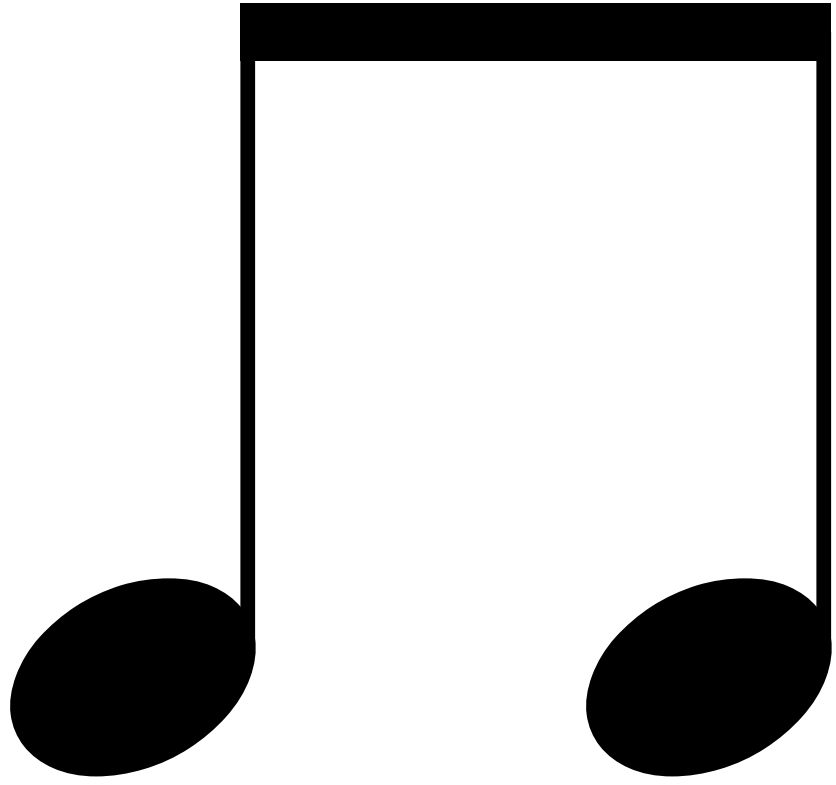
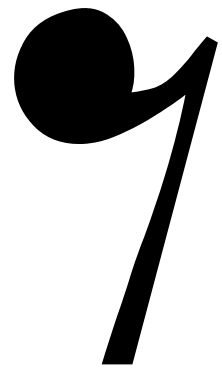
ta _ a _ a _



ta

ki

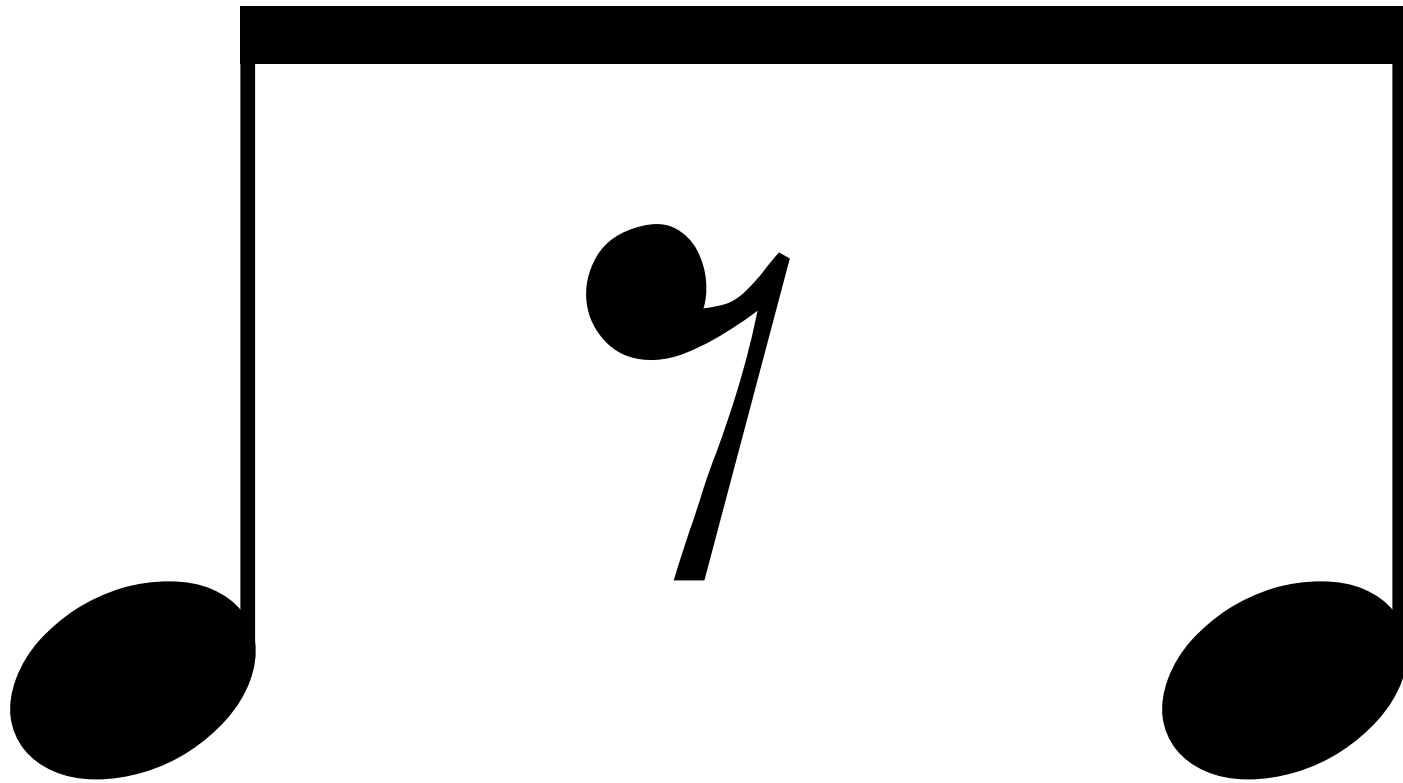
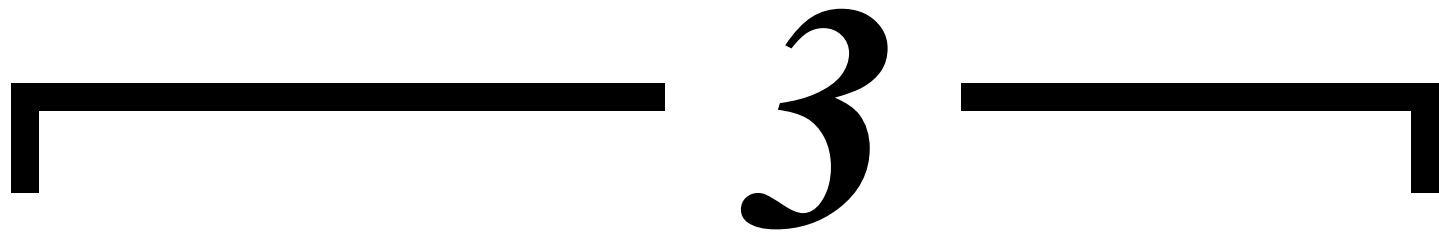
da



(ta)

ki

da

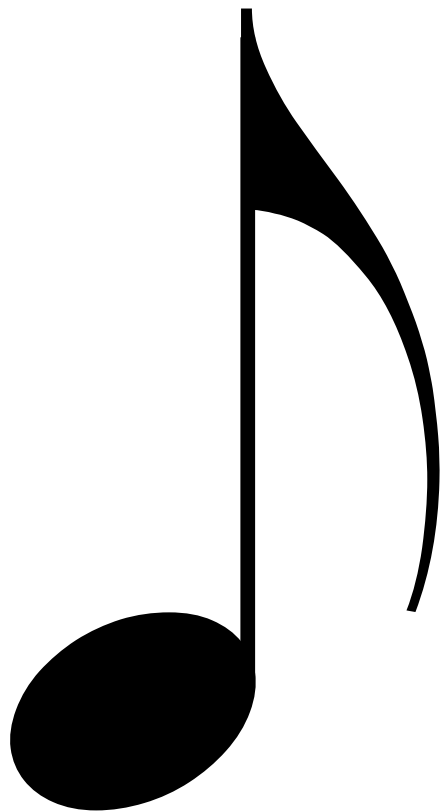


ta (ki) da

A musical notation diagram for the syllables 'ta ki (da)'. It features a treble clef on the left, a 3/4 time signature, and a single musical staff. The staff contains three notes: a quarter note, a half note, and a quarter note. The notes are positioned on the first, second, and third lines of the staff, respectively. Below the notes are the syllables 'ta', 'ki', and '(da)' in a serif font.

ta ki (da)

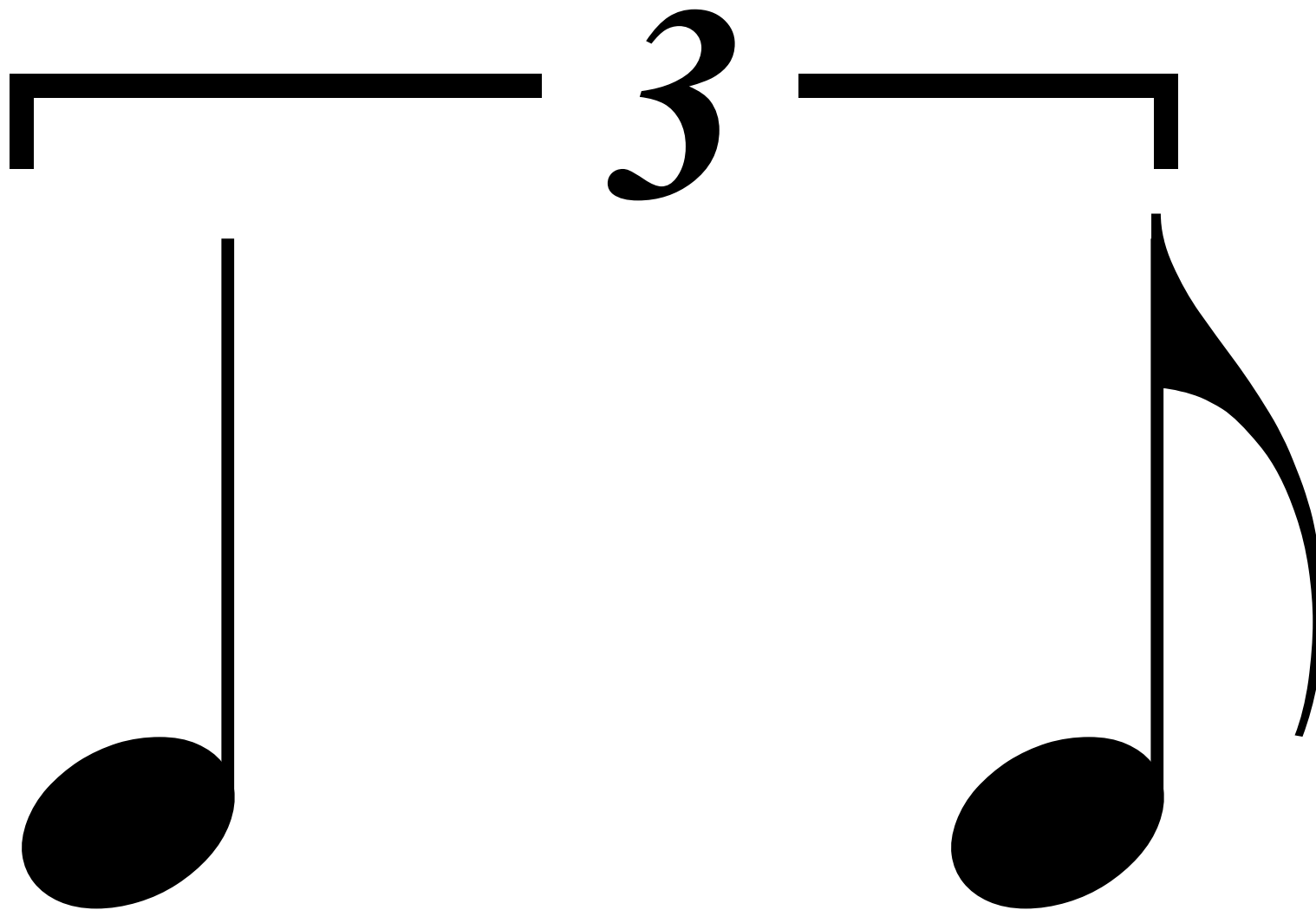
┌ 3 ┐



ta

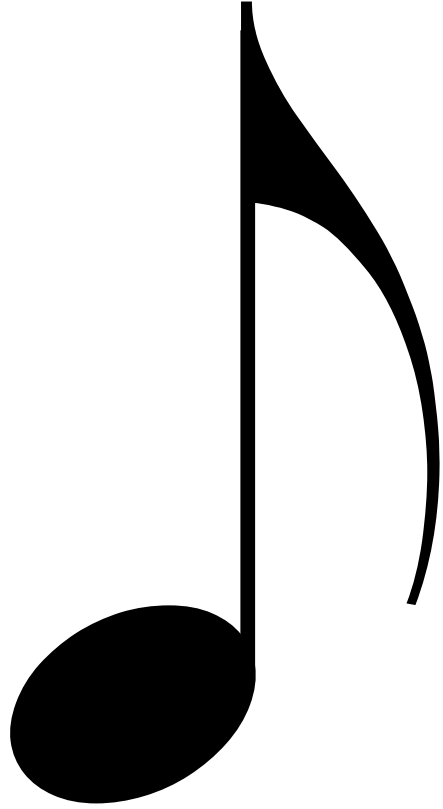


ki



ta

da



ta



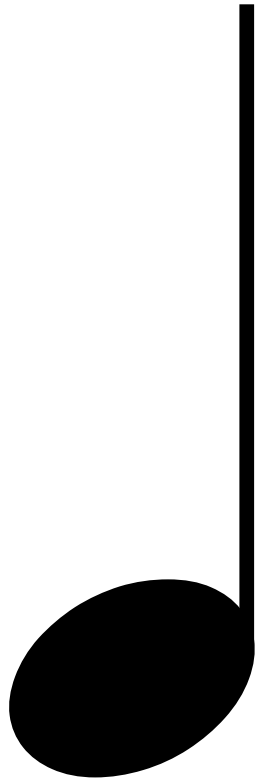
di



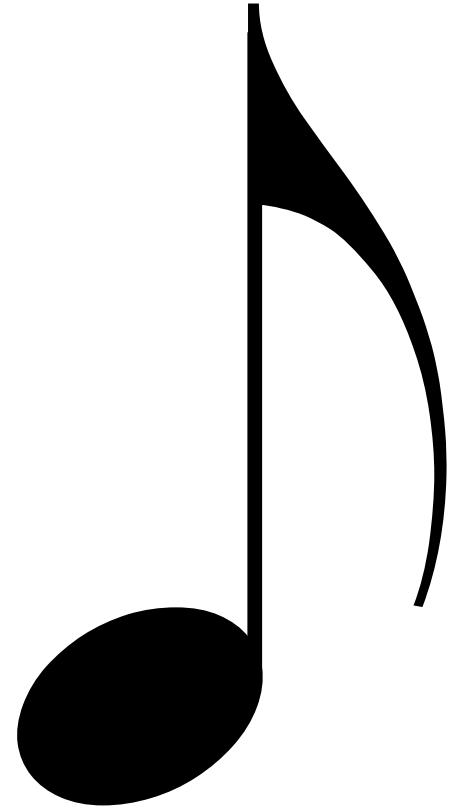
di



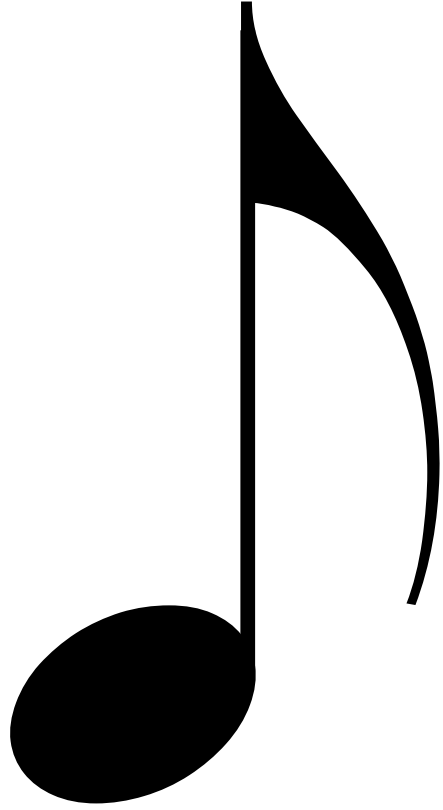
(ta)



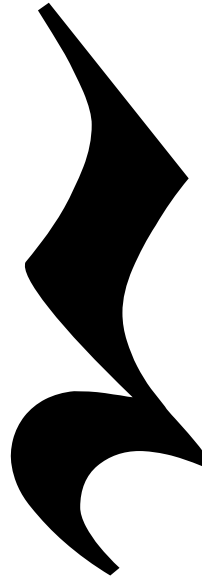
di



di



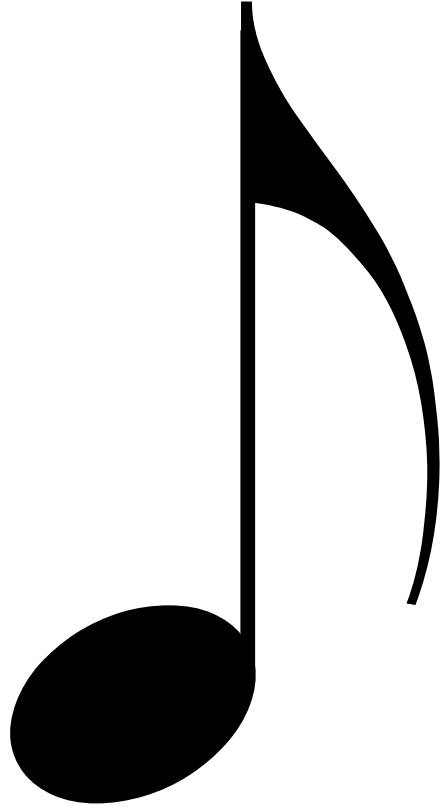
ta



(di)



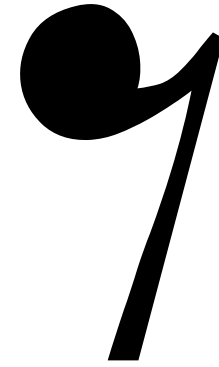
di



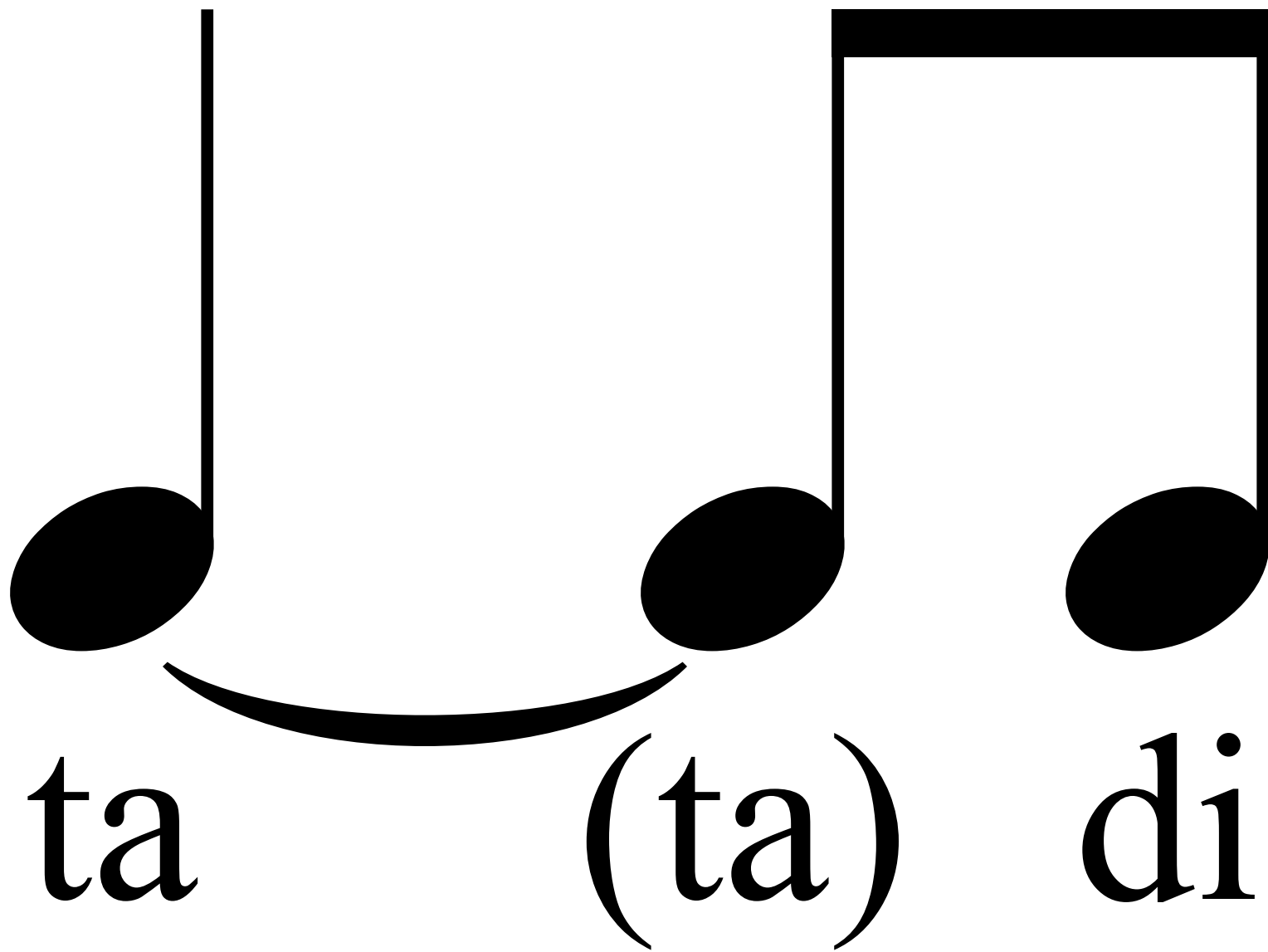
ta

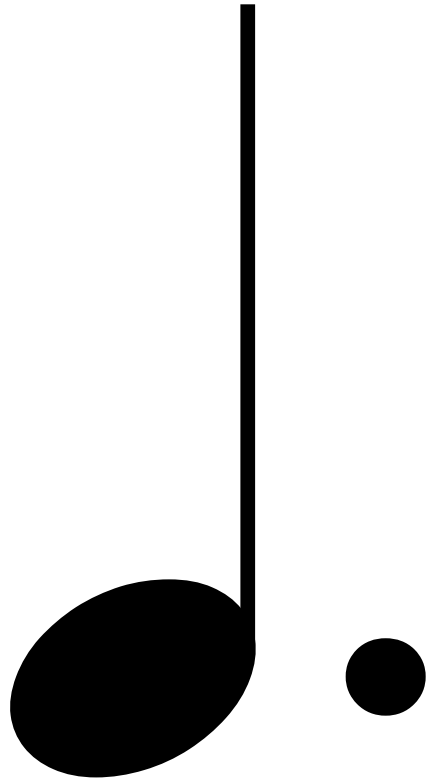


di

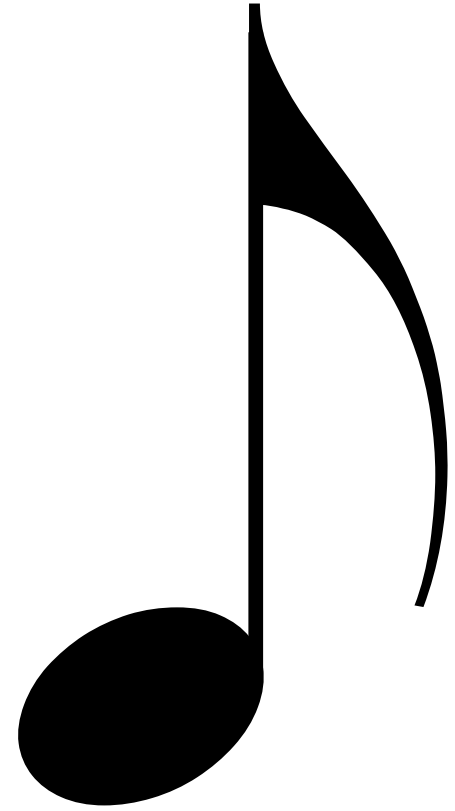


(di)





ta



di